

[Fesseln Sie Ihre Leser mit einem ansprechenden Exposee. Normalerweise ist dies eine kurze Zusammenfassung des Dokuments. Wenn Sie Ihre Inhalte hinzufügen möchten, einfach hier klicken und mit der Eingabe beginnen.]

User Manual

INMOTION P2 / P2F

INMOTION Switzerland

CONTENTS

1. Product Introduction	2
2. Safe Driving Precautions	2
3. Overview	2
3.1 About this Manual	2
3.2 Related Document and Date	2
3.3 Relevant Agreement	2
4. Product Overview	3
4.1 Serial Number	3
4.2 P2/P2F Dimension Figure	3
4.3 P2/P2F Specifications	3
4.4 Product Parameters	4
4.5 Assemble P2/P2F	4
5. Product Instructions	4
5.1 Riding Modes	4
5.2 Bicycle Learning Mode	5
5.3 Bike Code Parameters	5
6. APP	5
7. Safety Tips for P2/P2F	6
7.1 Charging Method	6
7.2 Safety Tips for Charging	6
7.3 Riding INMOTION E-Bike P2	6
7.4 Precautions before Riding	7
7.5 Safe Driving Precautions	7
8. Maintenance	8
8.1 Storage	8
8.2 Cleaning	8
8.3 Treatment	8
8.4 Inflation & Exchange Inner and Outer Tires	8
8.5 Brake Maintenance	8
9. Legal Statement	9
9.1 User Statement	9
9.2 Personal Information Statement	11
9.3 Intellectual Property Statement	12
10. Product Certification	13
11. Product Warranty	13
11.1 The Warranty Periods of Different Parts	13
11.2 Service Policies for Repair	14
11.3 Product Warranty Card	15

1. Product Introduction

This manual is applicable to INMOTION P2/P2F manufactured by Shenzhen INMOTION Technologies Co. Ltd.

2. Safe Driving Precautions

The following components and parts shall be included when leaving the factory. Please check after unpacking. If there are any missing components and parts, please contact the dealer or after-sale service department.

Model P2/P2F

No.	Parts	Quantity
1	Main body	1 pc
2	Adapter	1 pc
3	User manual	1 pc
4	Foot pedal	1 pair
5	Saddle	1 pc

Warning!

Use of unauthorized parts and components or incorrectly installed parts and components may result in damage to P2/P2F or even personal injury. To ensure quality and safety, all parts of P2/P2F will be subject to the approval of INMOTION Technologies Co. Ltd. and assured to be correctly mounted to P2/P2F.

Please do not try to ride on a P2/P2F that is not correctly, effectively, and completely installed. Do not disassemble, refit P2/P2F without permission, or it will cause irreparable damage of P2/P2F and may result in personal injury.

3. Overview

3.1 About this Manual

For your safety, please read over this manual before riding. Knowing all the listed safety warnings and precautions will help you for a better riding. This manual is applicable for INMOTION E-Bike P2-series products manufactured by INMOTION TECHNOLOGIES CO. LTD.

Any questions or any information you cannot get from this manual, please immediately contact INMOTION local official Distributor/Dealer or after-sales service department.

3.2 Related document and data

The PDF Manual, precautions for battery pack, APP as well as the Help document can be downloaded from the official website of INMOTION TECHNOLOGIES CO. LTD. It is www.inmotionworld.com.

3.3 Relevant agreement

The following instructions are applicable for this Manual. Please pay more attention to the related Warning, Notes and Prompts

Warning Your motion or action may result in personal injury.
Prompt Matters or functions prompt users need to pay attention to.

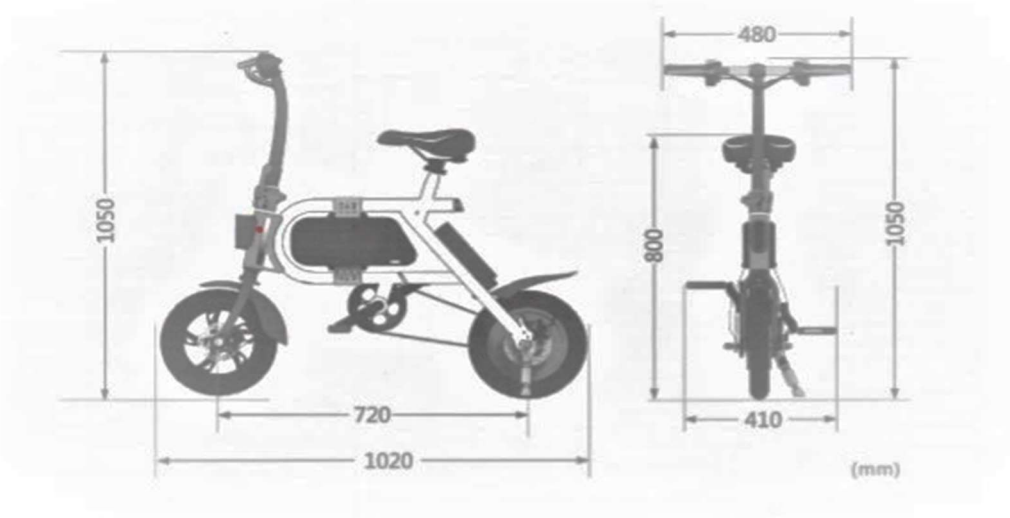
4. Product Overview

INMOTION E-Bike P2/P2F is a kind of compact, effective and economic personal transporter. The fashionable and light structure design, as well as the lithium-ion battery (high configuration) will provide you with joyful riding experience.

4.1 Serial No

Serial No (SN) is the only TAG of this product, which is used for quality tracking and after-sales services etc. of the product. Please well record and keep the Serial No that can be obtained from the followings: External packing, warranty card, E-Bike body (on the side of the controller box).

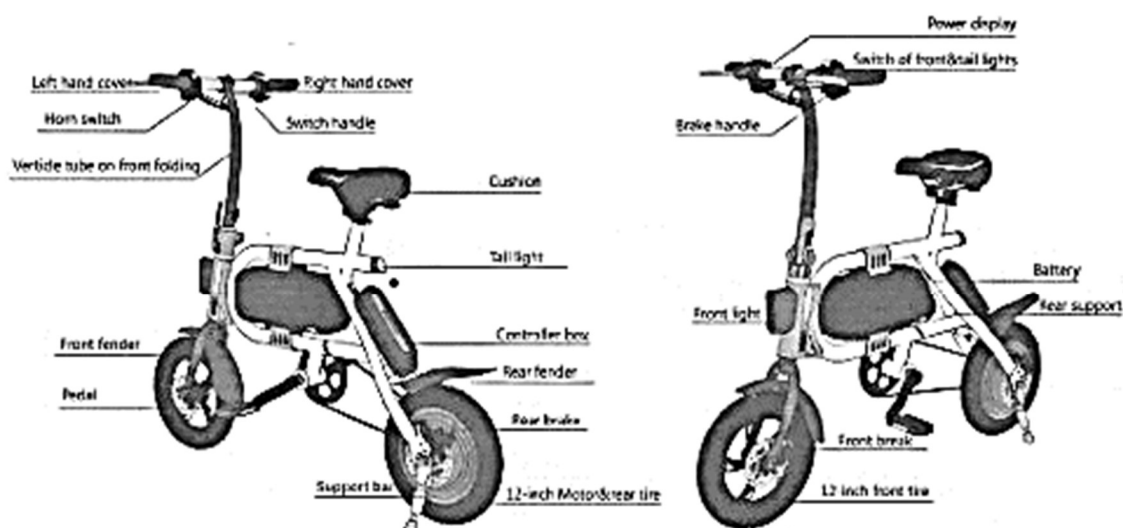
4.2 P2/P2F Dimension Figure



4.3 P2/P2F Parameter

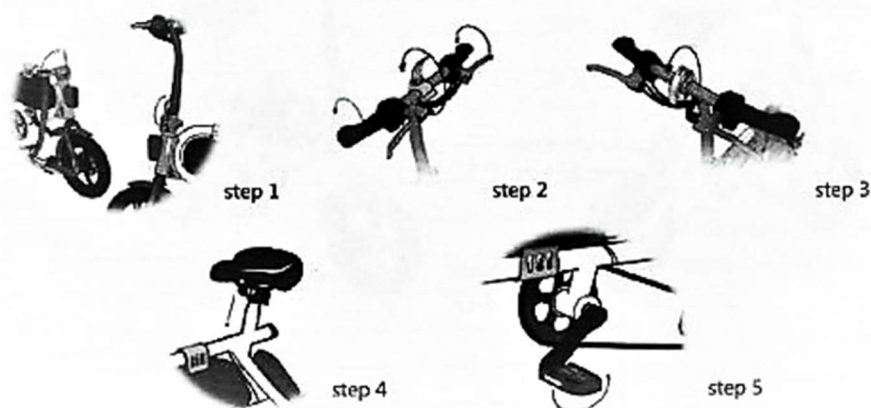
Modell	P2	P2F	(1) The maximum speed is measured at
Max Speed (1)	30 km/h	30 km/h	The temperature of 77°F(25°C). the payload
Ranges (without pedal assist (2)	30 km	80-100 km	Of 70 kg (154.32 lbs), fully charged and the
Ranges (with pedal assist (2)	60-70 km	160-180 km	Flat pavement. The factory default speed is
Max Slope	12°	12°	20 km/h, the max speed could be adjusted
Net Weight	17.0 kg	19.9 kg	Via INMOTION APP.
Maximum Payload	120 kg	120 kg	2) The maximum speed is measured at the
Expanded Size	1020x480x1050 mm	1020x480x1050 mm	Temperature of 77°F (25°C), the speed of
Battery Specification	36V 7.6 Ah	36V 22.4 Ah	20 km/h(12.43 mph), the payload of 70 kg
Input (Charger)	AC 100V-240V 50/60 Hz	AC 100V-240V 50/60 Hz	(154.32 lbs) and on the flat pavement. The
Charging Time (3)	-6.5 h	-13.5 h	Factors like environment temperature, road
Tire	12 Inches Pneumatic Tires	12 Inches Pneumatic Tires	Surface condition, payload etc. will affect the
Brake Type	Double Disc Brakes	Double Disc Brakes	range.
Working Temperature	-10° till 40° C	-10° till 40° C	(3) Charging time varies with the ambient
Motor Power	350 W	350 W	Temperature and the battery capacity that
USB Interface	5 V 1 A	5 V 1 A	May change in the course of time.
IP Ratings	IP 54	IP 54	

4.4 P2/P2F Parameters



4.5 Assemble P2/P2F

- Step 1: Hold well the direction bar as the picture shows and lock the folding handle as the picture shows. (See picture 1 and 2)
- Step 2: Install the foot lever on the E-Bik as the picture shows (Note: Screw tightly)
- Step 3: Move the head of the direction bar as the picture shows and then well adjust the cross handle (to the comfortable point you need)
- Step 4: Try to fasten the folding wrench



5. Product Instructions

The INMOTION P2 series electric bikes provide three riding modes which can be switched by the rider as needed by a mobile APP connected to the bike.

5.1 Riding Modes

1. Eco mode: Power assistance and throttle start is relatively soft. Only when the bike speed reaches 5 km/h, the throttle can start. The maximum speed of riding is limited to 18 km/h. Under same conditions, pure power of power assistance range in the eco mode is even larger.
2. Common mode: Power assistance and throttle start is slightly strong. When the bike speed is 0 km/h, the throttle can also start. The maximum speed is limited to 20 km/h.

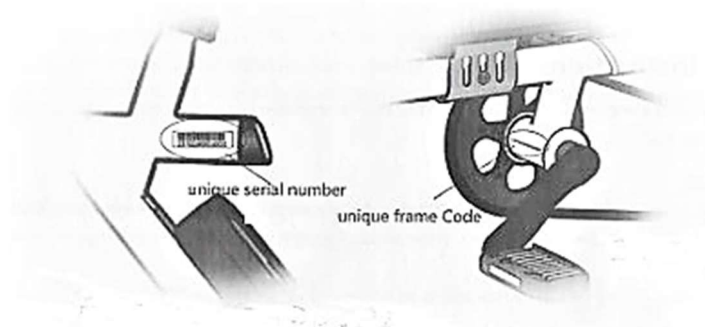
3. Extreme speed mode: Power assistance and throttle start is stronger. This mode ensures the maximum performance of the motor under the premise of riding safety. The maximum speed of riding is up to 25 km/h. Note that under same conditions, the extreme speed mode will reduce the range of the bike.

5.2 Bicycle Learning Mode

When the bicycle learning mode is selected using the INMOTION APP, the power assistance function is turned off, and the speed is limited to 7 km/h.

5.3 Bike Code

Each INMOTION P2 electric bike has a unique code which is labelled on the frame in front of the taillight. The frame also has unique code that is engraved on the bottom bracket of the frame.



6. APP

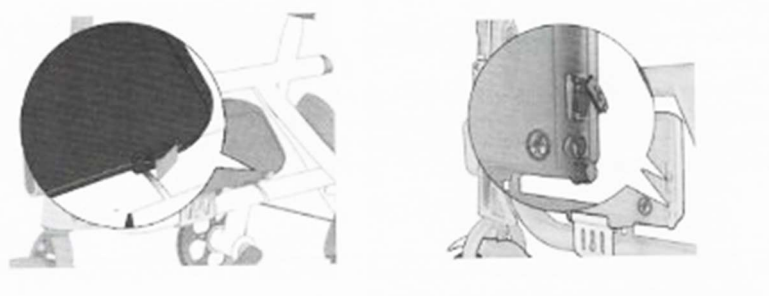
This APP is specially designed for users by INMOTION based on the manufactured products, which can realize such functions as controlling the vehicle, making friends, releasing INMOTION articles, taking part in INMOTION activities, buying INMOTION accessories etc. The APP name is INMOTION SCV on the APP Store and Android smart phone. You can get this APP from our website or corresponding APP Store. Through this APP, you can realize the following functions:

- E-Bike control: Lock, unlock, auto cruise.
- E-Bike body status display: It can display the speed, mileage, electric quantity etc.
- Parameter setting: Max. speed.
- Failure detection: It can realize the evaluation and detection to the status of INMOTION E-Bike.
- After-sales service: We can arrange our workers for you to deal with the after-sales services.
- For more detailed functions of this APP, please download the product manual of the latest APP with reference to the prompts and help document. We regularly promote new functions on the APP.

Prompt

INMOTION E-Bike connects with the mobile through wireless Bluetooth 4.0 BLE, and is suitable for systems such as Android 4.3 or above, IOS 7.0 or above IOS system.

7. Safety Tips for P2/P2F



7.1 Charging Method

- Step 1: The charge port is on the tail of the battery,
- Step 2: Inst the charging port of the charger to the connecting charge port of the battery (please make sure the charge port is dry).
- Step 3: When the charger indicator turns red, it is charging, when it turns green, it is fully charged. After fully charged, please stop charging, as long-term charge will affect the service life of the battery.
- Step 4: After charging, please cover the charging port in case water in.

7.2 Safety Tips for Charging

Please charge at least 5 hours before first use.

- To maximum extend the battery life, please charge it everyone month or two days after riding it. Please charge it under propre temperature and environnement.
- Not charging timely may cause battery damage. As time goes by, battery capacity will gradually run out, and eventually lead to battery over-discharge.
- Please use the battery, charger, and cable provided by original manufacturer, to avoid dangers caused by battery overcharged.
- Please ensure correct connection of the charger and the cable, as well as enough ventilation environment.
- Please use it under dry condition. It is not allowed to make the charger or cable conect with water, as it may result in electric shock. Please do not tough with wet hands. If there is any failure during charging, pleas immediately pull up the power plug.
- Please guarantee to pull it up from the plug, not from the cable.
- Please regularly make sight check to the charger and its cable.
- If there is obvious damage of the charger or cable, to avoid further damage, please do not use the charger anymore and contact for exchange.
- Please do not personally repair the battery, charger, or cable. Any questions, please contact us.

7.3 Ride INMOTION E-Bike P2/P2F

INMOTION E-Bike is a kind of technological travel tool. Riding without better understanding of the operation specification will result in unpredictable injury. The following instructions are explained in detail on how to correctly ride the INMOTION E-Bike for green hands, especially those who ride it for the first time and list all precautions during the riding. Please carefully read it and ride INMOTION E-Bike as required.

INMOTION E-Bike is suitable for people over 14 years of age.

7.4 Precautions before riding

When riding or parking E-Bike, it will cause loss and affect the using performance of the product. Therefore, before riding, please pay attention to the following notes:

- Please check if all parts of the E-Bike are professionally installed without damage.
- Please check if the brake is well.
- Please check the folding mechanism is locked.
- Please check if there is enough power
- Please check if the tire is well.
- Please check if the handle is fixed. Once loose, please screw it down.
- You need to find an open and flat place with the square of at least 4m*20m to practice riding, indoor and outdoor are OK.
- You need to have a deep understanding to the surrounding riding condition, in order to ensure not to be disturbed by the cars, pedestrians, pets, bikes or other obstacles.
- You need a skilled assistant who is familiar to ride E-Bike and knows about all precautions and riding methods in this manual.
- Please do not test on smooth and wet ground.
- Please wear a helmet or other protectors to avoid possible injury.
- Moisture will make the brake react slowly, therefore, after cleaning the E-Bike, please dry and break it in a safe place.
- Please do not use this product under bad weather (such as: rainy, snowy, or icy condition)
- Before using this product under any environment, please ensure if the brake is OK.

7.5 Safe Driving Precautions

INMOTION E-Bike is a personal transportation with certain speed, which has been strictly inspected on the technology and manufacture. Please use it according to the safety warnings in this manual, otherwise it may bring risks. Any time or places, it may hurt you or even cause death due to the reasons such as falling, loss of control, collision etc. including that you do not ride INMOTION E-Bike according to the manual. Therefore, to reduce risks and avoid injury, you must carefully read this manual and obey the following precautions:

- When riding, please wear helmet and protectors.
- Please do not climb slope over 12°, and do not sharply speed up or slow down on the slope.
- Be cautious to the obstacles and wet and smooth road, do not ride on grass or pebble road.
- Please do not ride in water over 30 mm.
- Do not ride up and down the stairs.
- Do not ride in motorway.
- Do not soak in water.
- INMOTION E-Bike belongs to single-use vehicle, please do not ride by several people.
- Beginners at the age of 14 till 18 years or older than 45 years of age, please practice under someone's help.
- Before using, please confirm if the power is full, and if the tire is in normal inflation.
- Before familiar to the E-Bike, please do not ride with higher speed, instead please ride slowly.
- As for the special property of lithium battery, users should charge it at least one time one month. It is not within the warranty range if the battery is damaged due to irregular maintenance.
- INMOTION E-Bike is only used as daily transport tool, please do not use it in extreme sports or other dangerous riding methods.

8. Maintenance

8.1 Storage

- Please keep the E-Bike out of direct sun (even it is in trunk of your car), because after some time, the temperature of the after carriage and battery will reach 50°C, which will decrease the function and shorten the lifespan.
- Please do not place E-Bike in moisture condition.
- It will automatically discharge when the E-Bike is not in use. The battery power should be checked at least every 3 months and should be timely charged until it is full. Please do not keep it for long time, as it will cause inevitable loss (such as deep discharge of the battery) due to the battery without power.
- In winter, the battery will lose power faster due to the low temperature.
- Unreasonable storage will lead to the life loss of the battery in the E-Bike or other risks, therefore, please keep the E-Bike indoor in a dry place with proper humidity. If the E-Bike is not used for long time, please fully charge it and charge it at least once every month.
- Please fully charge the E-Bike if you do not use it for long time.

8.2 Cleaning

- Before cleaning, please make sure the E-Bike powers off, pull up the cable, and close the charging port. When cleaning, please notice not to make water in the port.
- Please use soapy water or clean water to wipe the shell of E-Bike with soft cloth. Please do not use high pressure water gun to wash it.
- The IP Rating of E-Bike is IP54, namely, it is spill-proof and dust-proof. Therefore, please do not soak the E-Bike in water, as it will lead to permanent damage.

8.3 Treatment

Please do not treat the battery and power device as general wastes. You have made great contribution to the environmental protection undertaking through riding E-Bike, so in order to further avoid unnecessary pollution.

- When scrap is required, please deal with your E-Bike and all related components (battery) through the authorized treatment facilities.
- Please obey the latest user guide. Any questions, please consult your dealers or contact Inmotion after-sales department.

8.4 Inflation and Exchange Inner and Outer Tires

Once there is insufficient air pressure, please timely inflate. Factory default tire pressure of P2F Series E-Bike is 2.8 Bar.

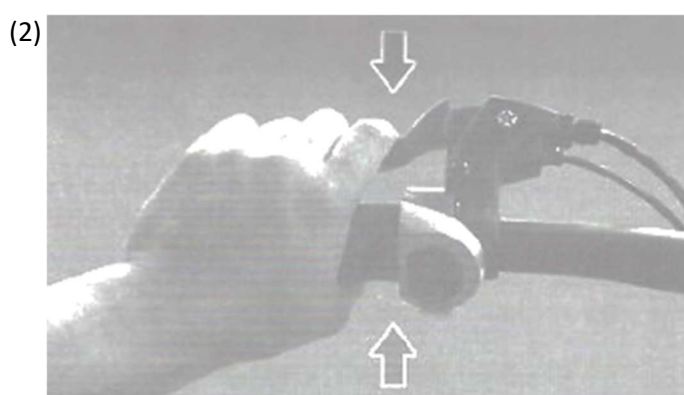
If the tire needs to be replaced due to tire burst or other reasons, please contact Inmotion after-sales department (also you can repair it in a bicycle maintenance shop).

8.5 Brake Maintenance

- (1) Insert the elbow to the brake and fix it on the screw of the frame. According to the direction of Left Loose and Right Tight, please lightly turn left to make the brake a little loose.



- (2) Then clench the brake with one of your hands, in order to make the rear brake close to the brake pad. Keep clenching.



9. Legal Statement

INMOTION P2 series can be considered as a intelligent and portable travel and commuting device. However, it is no replacement of the current existing means of transportation. When you use INMOTION P2 series as a means of transportation for short-distance travel, there might exist conditions causing injuries such as decline, crash, etc. and other risks. You have the responsibility and obligation to carefully read and learn the user manual for INMOTION P2 series and user guide; be familiar with how to drive the INMOTION P2 series; and be fully aware of the warnings and precautions as well as the provisions specified in the following legal statement, so as to reduce (but cannot totally eliminate) potential risks and to ensure the personal and property safety of yourself and other people.

9.1 Use Statement

For your safe application and good experience, kindly use the product in strict accordance with the following requirements:

1. Please make sure to carefully read and completely understand the User Manual for INMOTION P2/P2F and User Guide before using.
2. Please do not allow the ones who fail to carefully read and completely understand the User Manual for and User Guide to use your INMOTION P2/P2F.
3. Please follow instructions in the User Manual for INMOTION P2/P2F about the riding age of 12 till 60 years old. Do not allow the ones who are beyond this age scope to drive the INMOTION P2/P2F.

4. The pregnant and personnel who are not in normal physical or mental state cannot drive the INMOTION P2/P2F.
5. When you are in a bad physical or mental state, such as sick, taking drugs, drinking etc., please do not drive the INMOTION P2/P2F.
6. INMOTION P2/P2F is a riding vehicle designed for one person only. Two or more people must not drive one P2/P2F at the same time. Do not drive the INMOTION P2/P2F with loads or while holding a baby in your arms.
7. Please make sure that you are fully qualified in the physical and mental conditions for freely getting on/off and control the INMOTION P2/P2F without any assistance before riding.
8. Please do not modify or repair the INMOTION P2/P2F without permission or by the personnel who have not been authorized by our company. If there is anything wrong with the product, please contact the after-sales staff of INMOTION, which is your most secure option.
9. Please make sure that the INMOTION P2/P2F is not loose, damaged broken, or under other abnormal situations before riding.
10. Before charging, please make sure that the socket is dry, fault-free, and without any foreign matters. During charging, make sure to insert in the correct socket (100V-240V, 50/60 Hz), and avoid coming with children and pets. Furthermore, keep the INMOTION P2/P2F away from the combustibles.
11. The batteries of INMOTION P2/P2F must be placed in the environment at -20°C till 45°C. Please do not place the INMOTION P2/P2F in the environment where the temperature is above 45°C. When the temperature is below -20°, the batteries will enter the self-locking state, which are unable to be charged or used. Please place the INMOTION P2/P2F in a warmer environment for charging and using.
12. If there is any leakage (including damage, giving off a peculiar smell/smoke, or overheating) in the batteries, please stop the vehicle immediately, and avoid its contact with other objects.
13. Do not attempt to open or disassemble the batteries on your own. Do not perform abnormal operations or application to the batteries.
14. Due to different battery status and environment, the standby time of the fully charged INMOTION P2/P2F (the electric quantity display screen has 1 scale) is respectively 180 days and 30 days at most. Please pay attention to the standby time to avoid causing irreversible damage to the batteries because of failing to charge the in time.
15. Please do not wear high-heeled or other unsuitable shoes, and the clothes that are too loose-fitting and unsuitable when riding the INMOTION P2/P2F. Furthermore, you must wear professional protective gear during riding.
16. You are highly recommended to wear protective glasses when riding the INMOTION P2/P2F, to prevent eye injuries caused by dirt, dust or insects in the air and the possible adverse effects on riding.
17. Do not drive INMOTION P2/P2F on rainy days and on other wet roads. When riding on the wet and slippery roads, the tire resistance reduces, the braking distance becomes longer, and the INMOTION P2/P2F is easy to slip, which might cause accidents, for instance, the INMOTION P2/P2F is out of control.
18. Please use a dry soft cloth to clean the INMOTION P2/P2F body. Do not use strong water flow or high-pressure hose to clean the INMOTION P2/P2F body. Do not soak the INMOTION P2/P2F in the water, to avoid uncontrollable faults, abnormalities, accidents another risks.
19. Do not drive the INMOTION P2/P2F in the bad weather and the adverse environment with low visibility and poor light. Do not drive the INMOTION P2/P2F when you are extremely tired.
20. Since it is difficult for drivers, motorists and pedestrians to notice each other in time at night and in an environment with poor light, you are strongly advised against riding at night and in an environment with poor light, so as to avoid severe risks that might arise.
21. Please pay attention to the variation of road surfaces and surroundings when riding the INMOTION P2/P2F. Drive carefully to avoid hurting yourself or others.

22. Please do not drive the under unsuitable road conditions and in improper environment, such as on the stairs, in the elevators, or when passing through the revolving doors.
23. Pay attention to the distance among INMOTION P2/P2F body, body and obstacles when riding the INMOTION P2/P2F.
24. Do not take the risk of riding on steep slopes, bumpy roads, or other terrains that you have never met before during riding.
25. Please do not make a turn at a rapid speed. Please do not slam the brakes on when riding the INMOTION P2/P2F on the slippery road. The above-mentioned behaviours are easy to cause slipping and other uncontrollable situations.
26. Please do not drive on the bicycle lanes. Please do not drive on the motor vehicle lanes and other unsuitable places. Please strictly obey the traffic rules and other laws and regulations. When the INMOTION P2/P2F comes close to or passes through the crossroads, motor vehicle lanes, corners, and doors, please pay attention to slow down and avoid. In the meanwhile, the driver needs to have defensive awareness and pay attention to the dangers that might cause by the traffic and pedestrians.
27. When riding INMOTION P2/P2F pay attention to and take precautions against the vehicles from all directions, pedestrians, pot holes, sewer separators, railway tracks, expansion joints, road surfaces, road constructions, debris, and other obstacles as well as other dangerous situations that might affect the personal and property safety of you and others at any time.
28. Do not make and receive phone calls or do any activities or actions that might distract you when riding the INMOTION P2/P2F, to pay attention to monitor the external environment at any time.
29. Please drive forward along the riding directions of the bicycle lanes allowed and specified by the local governments and laws or the road edges. Do not drive in a direction not allowed by traffic regulations.
30. Please do not cut in the ways of vehicles and pedestrians when going out by riding the INMOTION P2/P2F.
31. Please do not put your hands on another means of transportation for dragging when riding the INMOTION P2/P2F. Do not perform any improper behaviours, such as making stunts, doing any other extreme sports etc.
32. Please do not drive the INMOTION P2/P2F alone when you need to drive to some remote area. It is necessary to prevent potential risks even when you drive the INMOTION P2/P2F along with others.
33. INMOTION P2/P2F is personal short-distance travel and commuting device. Do not use it for freight or other improper purposes.
34. The data and parameters of INMOTION P2/P2F vary along with different product models, which are subject to change by INMOTION without prior notice.

9.2 Personal Information Statement

1. Your personal information shall include the personal information that you voluntarily enter to bind the INMOTION P2/P2F when using the INMOTION APP (hereinafter referred to as APP) to connect with the INMOTION P2/P2F for registered certification, and the personal information that you voluntarily provide during the product application, including but not limited to your name, gender, age, address, contact way, occupation, and the time and place for using our service, etc.
2. In the process of using the APP, your personal information provided during the owner certification, product serial number activation, questionnaire and after-sales follow-ups and return visits, solicitations of the opinions or suggestions with regard to products or services, and activity participation is convenient for us to provide better products and services for you, and improve your user experience.

3. You have the right not to provide your personal information. However, if you refuse to provide some of your personal information., we may not able to provide better products and services for you, and even might deter you from using our products and services.
4. Any personal information provided by you shall be deemed as the fact you have entirely agreed with the idea that your personal information can be used by INMOTION itself or its affiliated companies after the disclosure. The application of INMOTION and affiliated companies shall include but not limited to the application of the internal staff, consultants, agents, suppliers, and partners of INMOTION and its affiliated companies.
5. You agree that we might provide your personal information to the interested third party when in line with any of the following conditions:
 - 1) After your special authorizations.
 - 2) Conforming to the relevant laws and regulations or the mandatory requirements put forward by the government agencies (including the judiciary authorities),
 - 3) Perform the Terms of Service available (including investigating possible violations),
 - 4) Deal with frauds, safety or technical issues,
 - 5) Protect the rights, properties or security of users or the public from being damaged within the scope of legal requirements or the allowable range,
 - 6) The needs under special and/or emergency circumstances.
6. The electronic data of your personal information can be used for application, transmission and storage and the above-mentioned behaviours might exit in or out of China.
7. You completely agree with the idea that INMOTION and its affiliated companies might push the information regarding the products and services as well the relevant activity information from time to time for your better application and experience.
8. We will take reasonable and safe measures to protect the safety of your personal information, and to prevent your personal information from being disclosed and used without authorization. Furthermore, we will also drive other interested parties accepting and using your personal information described in this legal statement to fulfil the same obligations. You agree with the idea that INMOTION decides the time to save and keep your personal information according to the time required by intended use or any agreement, laws and regulations.
9. You agree to exempt INMOTION and/or its affiliated companies another receivers and/or users from any claims, responsibilities and losses caused or might be caused by disclosing and using your personal information according to this legal statement, unless the above-mentioned.

9.3 Intellectual Property Statement

Unless otherwise stipulated in laws and regulations, or otherwise agreed in agreements, all rights of the intellectual properties (including but not limited to the copyright, trademark right, application right, permissions, and other powers) with regard to the products and their accessories, APP and website are reserved by INMOTION. No illegal use or any other punishments shall be conducted without the prior written consent of INMOTION. This legal statement shall apply to the Law of the People's Republic of China.

For all the claims, responsibilities and losses caused or might be caused by consumers and any third party violating this law statement, INMOTION shall assume no responsibility for the claims and any other obligations.

This legal statement constitutes the integral legal part of the INMOTION products (please make sure to transfer this legal statement during product reusable). You can choose to accept all the terms and conditions of this legal statement for using the INMOTION products.

If you use the INMOTION products, it shall be deemed as the fact that you have agreed to accept all the terms and conditions of this legal statement and to undertake any possible risks and responsibilities.

If you do not agree to accept all the terms and conditions of this legal statement after purchasing our product, please return the goods, and make sure that the products and packaging are intact without affecting the secondary sales during the sales return. Thank you for choosing INMOTION and trusting us. For any questions, contact us, and we are always ready to be at your service.

10 Product Certification

This product is qualified by passing QC inspection and allowed to be sold on the market. The warranty card (it takes effect upon manufacturer's seal and pasting with serial number) and regular sales invoice is effective maintenance certificate. Please keep the warranty card properly.

11 Product Warranty

Dear customer,

Many thanks for your purchasing our product.

After purchasing our product, please provide your correct, complete and authentic personal information, write the serial No. of the purchased product into the warranty card, ask for a valid invoice and keep it properly so as to be able to use our warranty service should any issue occur in future.

To ensure high-quality service, INMOTION promises that it will provide repair, replacement and return services free of charge for products in accordance with our warranty policies (only products purchased on the Chinese mainland). Except for costs including insurance, delivery, transportation etc. the warranty service is provided free of charge.

11.1 The warranty periods of different parts

Body, Handlebar stem	12 Months	Natural cracking, fracture and other phenomena
Motor, Driver, External Charger	12 Months	Due to poor manufacturing performance and failure to repair
Floodlight, Decorative light, Tail lamp, Kickstand	6 Months	Due to poor manufacturing performance and failure to repair
Battery	6 Months	Replacement of the new battery at 6 months of capacity less than 65% of the representation capacity
Rear wheel, Handlebar rubber, Decorative cover		The wearing part is not scope of warranty

The following circumstances will not be covered by the warranty, and the customer must pay for the repair:

1. Damage incurred by man-made causes.
2. The E-Bike has travelled over 2000 km (For the vehicle which has accumulated more than 2000 km of mileage, we propose to repair and maintenance and replace the tire according to the tire wear condition).

3. Any damage caused by failure to follow the requirements in the instruction manual to correctly assemble or use the scooter.
4. The serial No. has been deleted or modified.
5. The serial No. bar code or model on the product warranty card does not coincide with the product itself.
6. The product has been disassembled or repaired by personnel unauthorized by INMOTION.
7. Daily wear and tear (including wear and tear of the scooter shell, handle grips, tires etc.) that does not affect the product's functionality.
8. Damage caused by accidents or improper use, such as physical damage, fall-and-break damage, collision damage, severe oxidation etc.
9. Damage caused by overload, forcing through obstacles (including but not limited to riding downstairs, hitting the ground etc).
10. Performing X-sports stunts etc.
11. Damage caused by disassembly, transportation, loading/unloading etc in the process of return for repair.
12. Damage caused by fire, liquid immersion, freezing, earthquake, or other storage conditions or force majeure.
13. Depletion of wearing pieces such as the packing material, different types of technical documents etc.
14. Products used for commercial purposes will not be covered by the warranty.
15. For malfunctioned products whose warranty has expired, INMOTION provides paid repair service, and as to the charging standard and accessory prices, you can contact our after-sales personnel for mor details.

11.2 Product Repair Service Policies

1. Customers can call our official technical support number +86 (0)755 2572 2469 for after-sales help, or directly contact the dealers from where they bought the products and ask them to facilitate after-sales service process. For detailed after-sales service policies and procedures, visit our official website www.inmotionworld.com.
2. After receiving the malfunctioned product from the customer, we will initiate communication with customer about the malfunction cause, liability, repair cost, estimated time needed to rectify the malfunction etc. When no more dissent is left, the repair process will start.
3. For products that have been repaired by us, within one month after completion of the repair, the product will be covered by our free of-charge warranty service.

11.3 Product Warranty Card

Customer		Serial No.
Purchase date		
Contact number		
Email		
Address		
Dealer name	Contact	
Dealer address		

Version No: Version 1.1

Contact Us:

Add: 18F, B1, Nanshan iPark, No. 1001, Xueyuan Ave, Shenzhen. P.R.C. 518055

Email: service@imscv.com

Tel +86 (0) 755 2572 2469

Fax +86 (0) 755 2572 7563